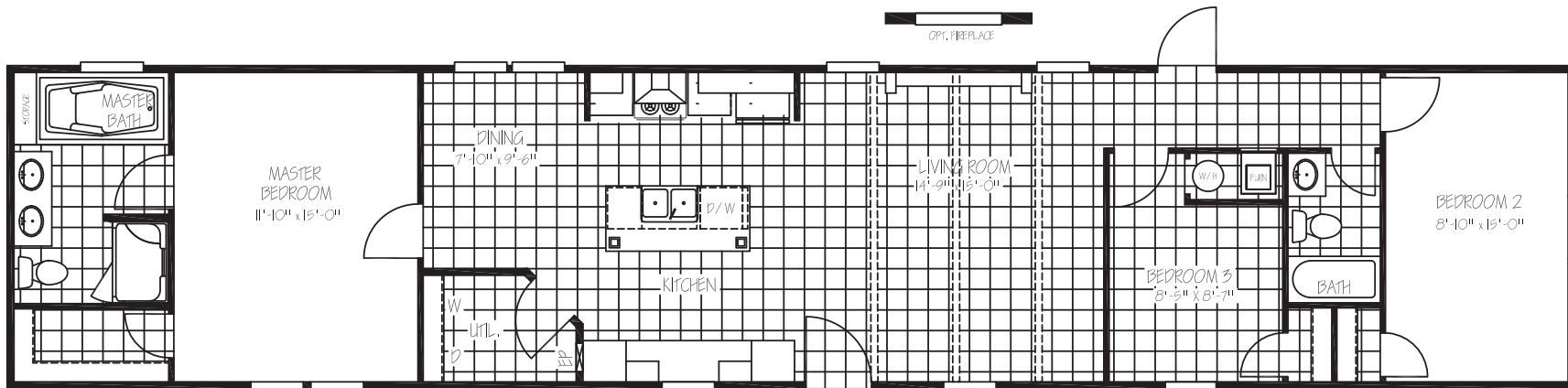




# TITANIUM

**CYPRESS**

**TTM16763C | 16 x 76 | 1,191 sq. ft. | 3 Bed 2 Bath**



# STANDARD FEATURES



## TITANIUM

### KITCHEN

- 42" Overhead Cabinet System
- 3/4" Hardwood Cabinet Doors
- Lined Overhead Cabinets
- Lined Center Shelf in Base Cabinets
- Brushed Nickel Lever Handles Interior Doors
- White Farmhouse Kitchen Sink
- Spring Loaded Faucet
- LED Flush Mounted Ceiling Lights

### BATHS

- 72" Deck Tub W/Cab Door Access to Plumbing
- 48" Fiberglass Shower with Glass Doors
- Dual Ceramic Lavs in Master
- LED Flush Mounted Ceiling Lights over Shower, Tub, Lav
- 54" Fiberglass Tub/Shower in Guest Bath
- Brushed Nickel Metal Faucets w/Lever Handles
- Elongated Toilets
- Master Bath Mirror Trim

### INSULATION

- R-21 Blown Fiberglass Roof (Formaldehyde Free)
- R-11 Fiberglass Insulation in Walls (Kraft Back)
- R-11 Fiberglass Insulation in Floors
- Thermal Zone II

### INTERIOR

- 8 Foot Flat Ceilings
- Beamed Ceiling in Living Room
- Upgrade Lino Living Room
- 52" Brushed Nickel Ceiling Fan in Living Room
- Wire and Brace for Ceiling Fan Master Bedroom
- Brushed Nickel Glass Light Fixtures in all Bedrooms
- LED Flushed Mounted Ceiling Lights
- 2" Blinds Throughout Except Master Bath
- Living Room Entertainment Center

### EXTERIOR

- Low E Thermal Pane Windows
- Steel Front Door with Full View Storm
- Cottage Rear Door
- Vinyl Siding / Comp Roof
- Whole House Wrapped in OSB
- 5" Lineal Trim
- 16" on Center 2x6 Floor Joist
- Whole House Wrap / Vapor Barrier

### UTILITY

- Total Electric with 200 Amp Service
- Exterior Outlet Front Door Side
- Water Shut Offs at Toilets Only
- Whole House Water Shut-off
- Utility Door

### APPLIANCES

- 18 Cubic Foot Frost Free Black Refrigerator
- Plumbed for Icemaker
- 30" Black Electric Range
- Black Dishwasher
- Stainless Steel Vent-A-Hood
- 30 Gal. Dual Element High Efficiency Water Heater

### POPULAR OPTIONS

- Tile Backsplash
- Rustic Package
- 50 Gallon Water Heater
- Upgrade Appliances
- Lino Throughout
- Upgrade Insulation
- 100 AMP Electric Panel Box
- Electric Fireplace
- Gas Furnace
- Gas Range
- Smart Panel Siding with Trim Around All Windows
- Wind Zone 2
- Overhead Air
- Barnwood Doors